

About Microsearch

Microsearch Corp has been developing world-renowned professional applications in the field of surveying and geodesy for over 20 years.

Throughout the years, we have been constantly expanding the capabilities of our software products. We are surveyors programming for surveyors, and we use our own software for real work. We also take pride in providing the highest quality technical support to the many users of our software packages.

In addition to our software products, we provide the highest standard of survey network and traverse adjustment services.

Microsearch Corp consists of a strong, highly trained team of engineers and technicians, led by Dr. Robin Steeves.

About our President

Dr. Robin Steeves has over 25 years experience in surveying, geodesy, and the development of associated commercial-quality computer software. Robin's excellent programming and engineering knowledge permit his team to produce powerful, robust applications with very functional and friendly user-interfaces, as well as provide professional and reliable services in surveying and geodetic network processing.

Dr. Steeves has authored and co-authored 36 scientific and technical papers. He very much enjoys the challenges presented to him by surveying and geodetic consulting, computer technologies, and associated research and development.

Microsearch Products

GeoLab

The world-leading software package for performing surveying network and traverse adjustment tasks and related computations.

GeoLab Subscription and Support Packages

You can now keep up-to-date with the latest version of GeoLab by purchasing our very affordable Subscription and Support packages.

GeoLab Explorer

GeoLab Explorer is a companion application for Microsearch GeoLab that provides easy access to the binary data files that Microsearch GeoLab produces

Microsearch Closure

This new product provides a user-friendly and powerful environment for calculating survey traverse and network misclosures for all types of measurements handled by GeoLab. Keep an eye on our web site (www.msearchcorp.com) for the upcoming release of Closure!

Contact Information

E-Mail: msearch@msearchcorp.com

Sales: sales@msearchcorp.com

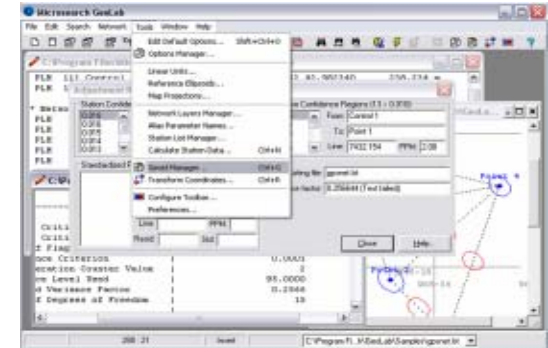
Web: www.msearchcorp.com

Tel: +1-506-472-4755

Fax: +1-506-472-3910



"GeoLab is the only adjustment software a surveyor needs."



GeoLab performs least squares adjustments of survey traverses and networks using survey measurements of any type to calculate the best adjusted values for the coordinates of all points as well as comprehensive statistical quality measures.

Since 1985 GeoLab has been the world-leading program for performing these types of calculations. It is used in many countries around the world by government agencies, commercial businesses, and educational institutions. The primary function of GeoLab is to provide an intuitive environment for easily performing least squares adjustments of survey networks and traverses.



GeoLab Features

- Performs adjustments and simulations (pre-analyses) of geodetic and surveying networks and traverses.
- Handles all, and any number of, geodetic and surveying measurements.
- Used (and proven reliable) world-wide since 1985 in all sizes of companies, many government and defense agencies, and many educational institutions.
- Imports measurement and coordinate data from many types of GPS receivers, total stations, and leveling instruments.
- Handles any combination of GPS, GPS RTK, and conventional traverse measurements, as well as leveling.
- GeoLab's Adjustment Results Summary feature makes it easy to locate large residuals and station confidence regions in your adjustment.
- Produces station and relative confidence regions in 1D, 2D, and/or 3D.
- GeoLab is extremely configurable and versatile, making it useful for a wide variety of project types.
- Provides comprehensive statistical analysis tools for easily analyzing networks and traverses of any size.
- Provides powerful tools for incorporating geoids into your adjustments and simulations.
- Provides versatile and comprehensive coordinate transformation tools.
- Models several types of scale, translations, and constant parameters right in the adjustment or simulation.

More GeoLab Features

- An open design allowing the development of your own in-house applications and data import filters.
- Supports the development of third-party data import plug-ins.
- GeoLab's powerful Coordinate Transformer performs many different types of coordinate transformations.
- Performs and solves for datum transformations.
- Plots histograms and network drawings with many options for configuring the drawings to your specific needs.
- GeoLab's Geoid Manager provides a Geoid Viewer which can use to manually interpolate geoid models for undulations and deflections of the vertical.
- Handles many different map projection definitions, with the capability of creating your own definitions.
- And much more!

GeoLab Explorer

GeoLab Explorer is a companion application for GeoLab. It provides easy access to the binary data files that Microsearch GeoLab produces, and therefore makes it possible to use the corresponding data in developing your own specialized applications that need to use GeoLab adjustment file data. GeoLab Explorer can be run in a full window mode, or it can be run in command line mode (batch mode). In each case the selected GeoLab binary file data is interpreted and output to specially formatted text files that your application can read.

GeoLab Training

Microsearch Corp is committed to providing our customers with the very best in technical support. That commitment extends to the area of training. Our trainers are ready to lead you through a variety of courses ranging from a 2-day GPS Data Adjustments course to a 4-day General Survey Data Adjustments program.

Some of the topics covered are:

- Introduction to Least Squares Theory and Adjustment
- Introduction to Microsearch GeoLab installation, familiarization
- Conventional Survey Data Adjustments
- GPS Data Adjustments
- Results Analysis and Reporting
- Geoid Modeling
- Coordinate Transformations
- Producing Transformation Parameters

Our GeoLab Trainer

We are proud to have Mr. Mike Strutt as our head GeoLab trainer.

Mike specializes in the creation and delivery of practical training programs covering the collection, processing, and adjustment of survey (GPS and conventional) and GIS (ArcView, MapInfo, GeoSync) data.

Mike has put his passion for surveying and his practical experience to good use in delivering high quality training since 1995.

Mike will be pleased to discuss your GeoLab training requirements, and design a course that meets your specific needs!